

ESMH

VISUAL APPROACH CHART

v 11 FEB 2025

Höganäs – Sweden

Höganäs Radio 123.550

N5611.1 E01234.6

Elev: **21 ft MSL**

Sweden Control **124.855**

Arrival Procedure:

Arrive via overhead at **1500 ft MSL**, descend on non-active side, join traffic pattern at beginning of crosswind leg at **1000 ft MSL**.

Helicopter: Direct arrival from **South-East** preferred.

Departure Procedure:

Climb and maintain **1000ft**. Remain in traffic circuit and comply with initial turn(s). Leave traffic circuit and then continue further climb. Avoid built up areas.

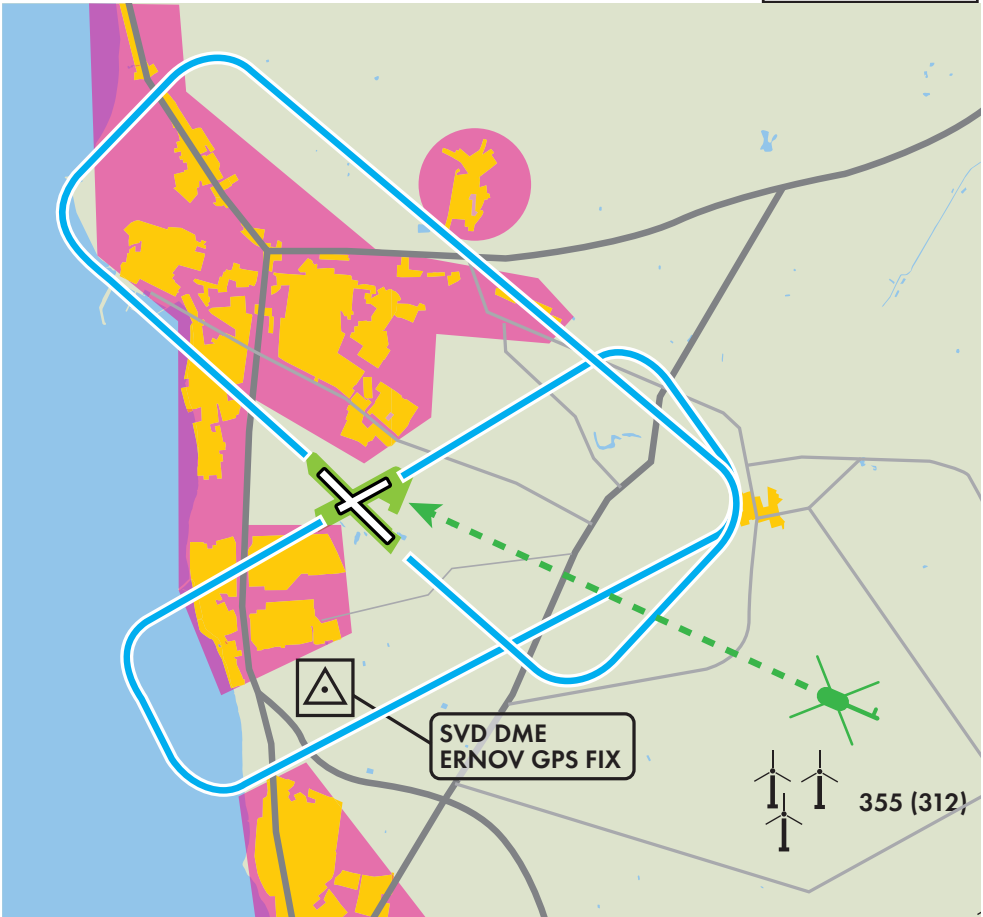
Helicopter: Direct departure to **South-East** preferred.

Traffic circuit:

1000 ft MSL Right hand circuit Rwy **06** and Rwy **32**

1600 ft

MSA 10 nm ESMH



ESMH

GROUND CHART

v 12 MAR 2025

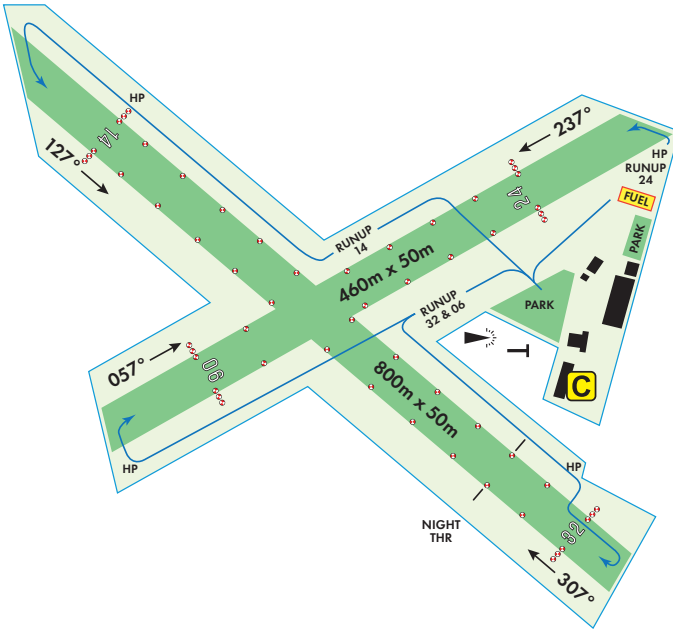
Höganäs – Sweden

N5611.1 E01234.6

Elev: 21 ft MSL

Höganäs Radio **123.550**

Sweden Control **124.855**



Hours of OPS:

H24, Operation permitted even if unmanned

Fuel:

100LL, 91/96UL, Jet A1
VISA/Mastercard/Cash
+46 42 342980
+46 70 2502619

Maintenance:

Aero Tronic Ltd
+46 70 7440055

Contacts:

Aeroclub +46 42 342980
Service +46 70 2502619
Field Status +46 70 6245944
www.nsf.se epost@nsf.se

Accommodation:

5 Rooms, 17 Beds
Self-service food
Bicycles avail
Town Center and shops nearby
Taxi: +46 42 330000

14/32	800x50m GRASS 650x50 Lights	06/24	460x50m GRASS No Lights
--------------	---------------------------------------	--------------	-----------------------------------

Traffic circuit:

1000 ft MSL Right hand circuit Rwy **06** and Rwy **32**

Arrival:

Arrive via overhead at **1500 ft MSL**. Descend on non-active side and join traffic pattern at beginning of crosswind leg at **1000 ft MSL**

Helicopter: Direct arrival from **south-east** preferred.

Arrival registration:

Registration compulsory
Use QR code on site or www.nsf.se



Departure:

Rwy **14** preferred for departure due to noise, aircraft performance and traffic permitting.

Use full runway length including all distance before threshold.

Climb and maintain **1000ft**. Remain in traffic circuit and comply with initial turn(s). Leave traffic circuit and then continue further climb. Avoid built up areas.

Helicopter: Direct departure to **south-east** preferred



Noise Restrictions:

Single departures permitted. All repetitive departures or TGLs must comply with local noise restrictions. www.nsf.se

ATS Flightplan:

PIC responsible for activation and closure of flightplan within 30 min of arrival.
Sweden CTRL **124.855**
Malmö ACC **+46 40 6132405**

Night OPS:

THR **32** Displaced **150m**. Only **650m** available
Pilot Controlled Lights – Transmit carrier wave **10 sec** on **123.550**